



COMPANY BUILT FOR

# COMMERCIAL RESTORATION SERVICES

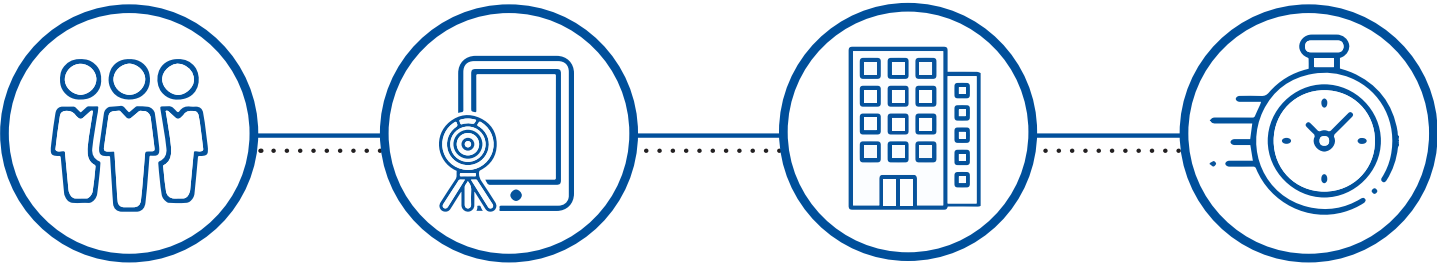
EXPERIENCED COMPLETE COMMERCIAL RESTORATION ACROSS CANADA

[WWW.WINMAR.CA](http://WWW.WINMAR.CA)

# EMERGENCY COMMERCIAL SERVICES ACROSS CANADA

.....

With over 40 years of experience in the restoration industry, WINMAR® is a leader in commercial restoration services across Canada. Regardless of the size of the project, our dedicated team will work efficiently and keep everyone informed throughout the restoration process. We are Canada’s first choice with over 90 locations and over 2000 employees from coast to coast.



## TEAMWORK

Commercial losses can only be handled by teams with the assets, human resources, tools, and industry expertise for the job. WINMAR® has been working on commercial losses across Canada for over 40 years. Our teams are trained and ready, so when a property emergency occurs, we are among the first on the scene to help with equipment and personnel.

## BUSINESSES, INSTITUTIONS AND STRATA COMPLEXES

From businesses to universities to strata complexes, we work with the commercial industry across Canada. We provide pre-loss site assessment and disaster recovery planning for our customers. Then, if an unexpected disaster occurs, we work as partners to minimize impact and restore the damaged property.

## TECHNOLOGY-FOCUSED

Technology is changing the way every industry operates, and commercial restoration is no different. We are actively implementing and using new technologies to better track, maintain and gain insights into our projects. Our goal is to continually improve our processes and the data available to both the businesses we work with, and their insurance providers.

## MINIMAL DOWNTIME

We are business owners too. We know that when a business is shut down, it has a severe impact on operations. Downtime is not an option. We will work with businesses to assess workspace operations, and engage quick timelines to get your business back up and running as fast as possible.





## EMERGENCY & DISASTER RECOVERY PLANNING

.....

Our experienced team at WINMAR® can help you develop a catastrophe plan best suited for your needs. We will work with you and your staff to prepare for the unexpected. Business Continuity Planning sets out to help commercial clients, property owners, managers and their tenants to be well prepared in the event of any property events or disasters. WINMAR® gets everyone back to business quickly, with little to no interruption. Please contact your local WINMAR® office in your area to learn more about the WINMAR® Catastrophe Plan and how we can help structure your current Business Continuity Plan.

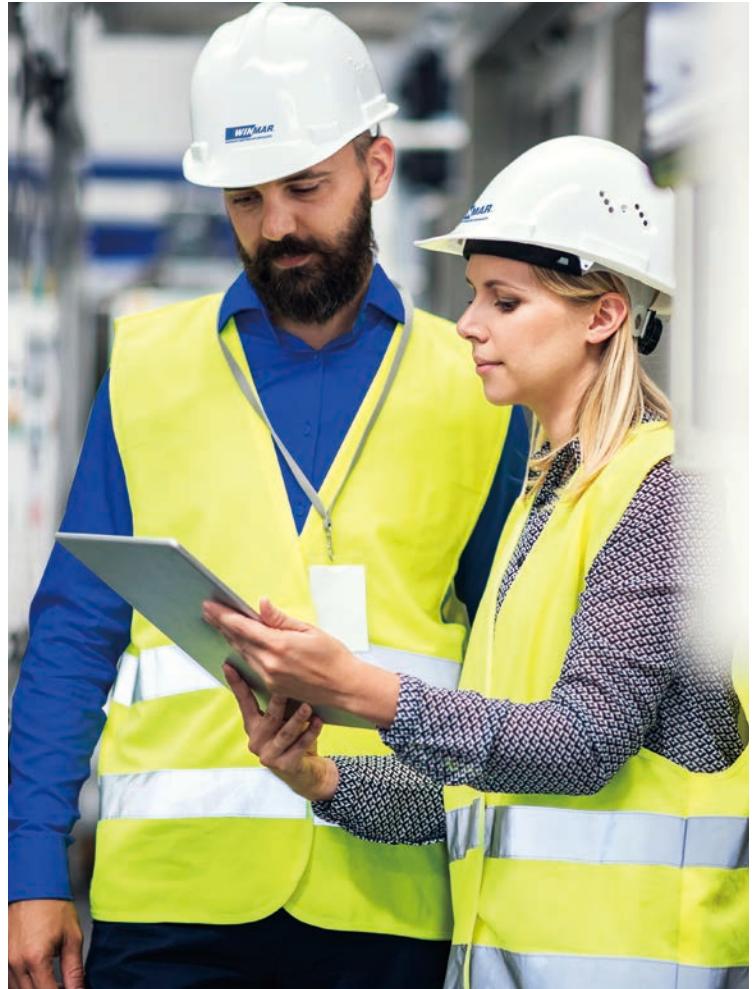


# HEALTH AND SAFETY

.....

When you hire WINMAR®, you'll have a team of fully licensed general contractors and professionals. Our teams follow stringent health and safety programs that meet or exceed provincial and federal requirements. You can rest assured that your building restoration will be completed at top-quality standards, within budget, and with the motto that "everyone goes home safe".

- We are committed to providing a safe and healthy work environment.
- We will identify, assess, eliminate, or control OHS hazards and risks associated with our activities.
- We will report all incidents and ensure each is fully investigated, understood, and the lessons learned are shared.



**“Getting Your  
Business  
Back Up And  
Running”**

At WINMAR®, we take every event seriously and understand the depth of the costs to your organization. Our professional property restoration specialists will work with you to fully restore your building to its normal operating condition in as little time as possible. Our 24/7, 365 emergency services mean we are among the first on the scene. We will take action right away to minimize damage and prevent further losses.



# WE OFFER A FULL LINE OF SPECIALTY COMMERCIAL EQUIPMENT

.....

Every WINMAR® location in Canada has access to our full line of specialized equipment, including mobile pumps, temporary climate control, temporary heat and generators, wall cavity drying units, portable freezers, HEPA air scrubbers, dry ice blasting, and much more.

WINMAR®'s Fleet of Equipment:

- Desiccant Dehumidifiers
- Mobile Pumps and Water Extraction
- Temporary Climate Control
- Temporary Heat
- Temporary Generators
- Foggers
- Low Grain Dehumidifiers
- Wall Cavity Drying Units
- Air Management
- Portable Freezers
- HEPA Air Scrubbers and Negative Air Units
- Dry Ice Blasting
- Esporta Wash System Ltd.
- Fireline™ Ultrasonic Cleaning
- Air Movers
- Commercial Dehumidifiers
- Hydroxyl / Ozone Generators
- Hydrosensors
- Moisture Meters
- Infrared Cameras
- 360° Cameras





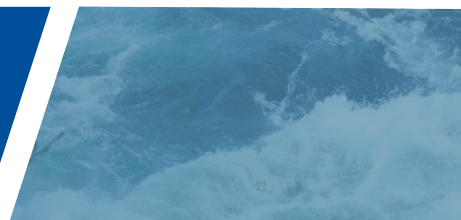
## FIRE DAMAGE



There is nothing more shocking or terrifying than a fire at your business or commercial property. Whether it's an office fire or your business is caught in the path of a wildfire, the damage can seem overwhelming. Get back to normal operations fast. WINMAR® is here to get you through these tough situations with complete commercial fire restoration services.



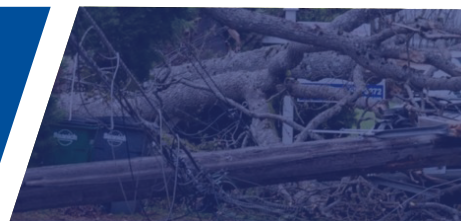
## WATER & FLOOD DAMAGE



A flooded business means that you may have downtime that will affect operations for weeks. WINMAR® is here for this exact situation to get your business up and running as fast as possible. Our 24/7 emergency service means that we will mobilize our teams and equipment at all hours of the day. We know that every minute counts when it comes to preventing extended damage and minimizing downtime.



## WIND DAMAGE



When not attended to promptly, wind, hail, lightning, ice storms, tornadoes, and hurricanes can all cause severe property damage and impair the structural integrity of your business. Significant secondary damage, such as water damage, may also be caused by these events. Prevent downtime to your business by taking a proactive approach to these types of property damage.



## MOULD REMEDICATION



Mould is an occupational hazard in the workplace, and if left untreated, it can lead to increased risk to building and business owners. The WINMAR® team of restoration experts have the know-how and safety protocols to remove mould quickly, minimizing downtime to business operations and keeping commercial buildings safe for occupants.



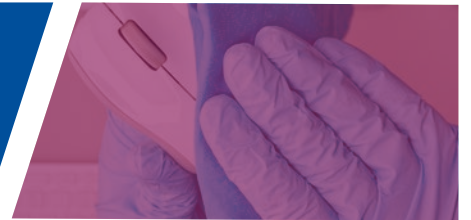
## ASBESTOS REMOVAL



Asbestos can be found in materials such as insulation, flooring, plaster, textured ceilings, register vents, duct wrap and roof shingles. If you suspect that you have asbestos at your business, avoid disturbing the materials yourself as it can release harmful fibres that, when inhaled, can cause severe health problems. Call the experts at WINMAR® to have asbestos dealt with quickly and safely.



## DEEP CLEANING



The CDC states that cleaning high-touch surfaces daily is a best practice to prevent the spread of viruses. We are dedicated to employee and public safety, and follow the CDC and Health Canada guidelines and standards of cleaning practices, procedures, and use of approved cleaning products to combat the spread of viruses in the workplace. We have services for both active-case and preventative situations.



## 24/7 EMERGENCY SERVICES



WINMAR® teams are known for their rapid deployment to damaged properties. Our self-sufficient teams can handle virtually any level of damage. We will bring your business or property back to pre-loss condition quickly. We know that for your business, downtime is not an option. Getting you back up and running will always be our top priority.

Call WINMAR® when you need rapid emergency response. A quick response is the best tool our emergency crews can provide when your business has just been hit by unexpected damage. We can provide temporary measures and initiate emergency procedures to reduce the impact of the property damage.

For more information, visit [winmar.ca](http://winmar.ca)



# *Coming Through For You 24/7*



1 (866) 494 - 6627

[winmar.ca](http://winmar.ca)



CSV12020