

# TRUSTED

Since 1977



Fire Damage



Water Damage



Wind Damage



Mould Remediation



Asbestos Abatement



General Contracting

*Coming Through For You!*

[winmar.ca](http://winmar.ca)



# RELY on the Experienced EXPERTS FOR COMMERCIAL PROJECTS



At WINMAR®, we understand the emergency response needs of Risk Management, Property Management, Physical Plant Departments, Public Entities and others. With state-of-the-art equipment and restoration teams from coast-to-coast, our prompt and professional assistance results in substantial savings and reduced business interruption.

Emergent events such as fire, water and storm damage significantly impact large commercial institutions and their day-to-day operations. At WINMAR®, we'll work with you to understand your unique requirements and bring your facility back to normal operating condition, as quickly as possible.



## DISASTER PLANNING

Our experienced team at WINMAR® will help your organization develop a catastrophe plan best suited for your needs. We'll work with you and your staff to prepare for the unexpected. Please contact your area's WINMAR® Regional Vice President or Regional Manager to learn more about the WINMAR® Catastrophe Plan.

*Coming Through For You!*



# TEAMS from COAST-TO-COAST INDEPENDENTLY OWNED & OPERATED FRANCHISES

We understand the impact of a catastrophic event and the urgency to RESTORE our Customers to pre-loss condition quickly and efficiently to original specifications with little interruption or unexpected costs.

WINMAR®'s national network of large loss partners provides prompt and professional service in uncertain times while working alongside your insurance company to get you and your team back to business.

Our utmost priority in any commercial restoration project is the Customer and their tenant's overall safety during the full timeline for the scope of the restoration project.

**90+**  
LOCATIONS  
*Since 1977*

**With over 90 locations and 2,000 employees, from coast-to-coast, we are Canada's TRUSTED choice, for residential and commercial restoration, since 1977.**



Photo Credit: Andy Hamilton

[winmar.ca](http://winmar.ca)



## OUR COMMERCIAL SERVICES



### FIRE DAMAGE

Damage from a fire, smoke and water, can destroy a home or facility and the owner or organization's precious possessions. The emotional toll on an owner to endure through such an emergent event is compounded by the damage to their property.



### WATER DAMAGE

Flooding, sewer back up, burst and leaking pipes, appliance and plumbing overflow or water from fire suppression can all contribute to significant property damage. If not remedied immediately, water damage has the potential to cause more serious issues in your home or business.



### WIND DAMAGE

Wind, hail, lightning, ice storms, tornadoes and hurricanes can result in severe property damage which can also lead to structural issues if not tended to promptly.



### MOULD REMEDIATION

Mould is known to grow rapidly in drywall, insulation, carpet, fabric and upholstery as a result of water damage. TRUST WINMAR® IICRC Certified Professionals for a full-scale restoration to ensure the health and safety of your staff.



### ASBESTOS ABATEMENT

Asbestos can be lingering in common building materials, such as: insulation, flooring, plaster, textured ceilings, register vents, duct wrap and roofing shingles. Disturbing these materials may lead to health-related issues. To ensure safe removal, RELY on WINMAR® for a removal plan.



### BIOHAZARD REMEDIATION

Hazardous materials, potential chemical or contamination can take place in your workplace, RELY on WINMAR® to provide qualified removal services and peace of mind. Our teams are experienced and skilled to handle any environmental situations. TRUST WINMAR® to assess, report and expedite any necessary services to remedy an environmental or health related concern.



### CONTENT CLEANING

TRUST WINMAR® to provide specialized equipment and trained technicians to process, clean and disinfect your valuable contents to pre-loss condition. Contents typically make up the majority of any property damage claim and are an integral component in the restoration process.



### GENERAL CONTRACTING

Our skilled and experienced WINMAR® construction teams offer full-service contracting. From conception, permits and demolition, through to finished interior installation, millwork and inspections, WINMAR® contractors are capable and knowledgeable to handle any design-build project, regardless of scope. TRUST WINMAR® to restore any size of complex Commercial Loss with our full service construction restoration teams.

## SECTORS WE SERVICE



Insurance



Education



Healthcare



Government



Long Term Care



Restaurants & Hospitality



Retail Services



### INSURANCE

Since 1977, WINMAR® has been a recognized and valued partner in the Insurance industry. Our team will work with you and your insurance provider to ensure the claims process is as smooth as possible. With over four decades of experience, specialized restoration equipment, and a thorough understanding of our Customers' needs during stressful times, our skilled and experienced WINMAR® team knows how to navigate the process with you while instilling peace of mind. Our qualified teams will walk you through every step of the process and return your property to pre-event condition.

### FIRST RESPONSE

*Our dedicated response provides you the security of knowing a plan is in place when an emergent event occurs.*



Smoke Damage  
Vehicle Impact  
Break & Enter  
Hoarding & Specialty Cleaning  
Board Up & Shoring  
Vandalism & Graffiti Cleanup

Document Recovery  
Business Continuity Planning  
Trauma or Crime Scene Cleaning  
Virus Disinfection  
CAT Planning  
Health & Safety

# TRUST & RELY on us

FOR QUALITY & CONSISTENCY

90+ LOCATIONS

### SERVICE DELIVERY MODEL

- Single point planning for any emergent event response
- Corporate, regional and local coordination
- Account management for you and your clients
- On call 24/7/365 across Canada
- National toll-free line: 1-866-494-6627
- National & regional preferred pricing models
- Priority client status, RELY on WINMAR® when an emergent even occurs you are our first response
- 24 Hour initial site reporting on all losses
- National mobile CAT & Large Loss response team

CLOSING THE LOOP THROUGH INCLUSIVE COMMUNICATIONS







Look for signs of water damage as dampness may indicate leaky pipes behind the walls.



**EDUCATION**

Faculty and Administrators RELY on WINMAR®'s dedicated teams to provide restoration services following an emergent event such as a fire or flood, remove asbestos or provide deep cleaning of their learning and recreational spaces. TRUST WINMAR® to adhere to CDC and Health Canada practices and procedures so students and staff can rest assured their school environments are clean and safe so they can focus on what matters.

- Preschool
- Daycare Providers
- K-12 School Facilities
- College
- University Campus
- Dormitories
- On-Campus Living
- Laboratories
- Research Centres
- Athletic Facilities
- Dining Halls



**GOVERNMENT**

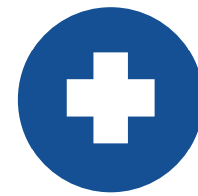
Numerous channels, including services and staff, are impacted when an emergent event strikes a government facility. TRUST WINMAR® to restore fire and water damage and provide mould removal, asbestos abatement and biohazard remediation for government-owned properties and facilities.

- Municipal
- Provincial
- Federal Crown Corporations
- National Park Buildings
- Political Facilities
- Museums

With franchises from coast-to-coast, WINMAR® provides the ability to scale the size of our team to meet the needs of your restoration project and ensure the work is completed by a qualified team with safety protocols and practices in place.

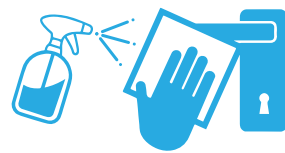


Mould growth can present as stains or discolouration on floors, walls, window panes, ceiling tiles, fabrics and carpets.



**HEALTHCARE**

Medical facilities TRUST WINMAR® to be their vital partner, providing essential expertise, resources, and know-how to facilitate critical property restoration services. WINMAR® employs highly specialized project managers and professionals to care for virtually any healthcare facility project. WINMAR®'s national network of experienced and skilled teams adhere to IPAC, CDC and Health Canada guidelines. The safety of your staff and patients is crucial during an emergent event. RELY on WINMAR® to ensure your facility receives the attention and service necessary to return to the business of caring for people and their families.



WINMAR® uses specialized detergents and applications for odour neutralization and removal of dangerous toxins.

- Hospitals
- Medical Offices
- Walk-in Clinics
- Physio Centres



**LONG TERM CARE**

From coast-to-coast, Long Term Care property owners RELY on WINMAR® for more than restoration services – from deep cleaning and biohazard remediation to general contracting for any size and scope of renovation and construction project. Our national network of experienced and skilled teams adhere to CDC and Health Canada guidelines.



**SUITE REFRESH & RENEWAL**

RELY on WINMAR® to restore your Long Term Care property following an emergent event and lead your next suite renewal project. Our skilled and experienced teams provide comprehensive contracting services from initial concept to final interior installations.



All WINMAR® Franchises hold valid Certificates of Insurance and Workplace Safety Clearance Certificates. Our on-site policies ensure your property is properly cared for during your renovation.







### RESTAURANTS & HOSPITALITY

TRUST WINMAR® to get your location back to business following an emergent incident. In the event of damage due to a natural disaster or isolated damage, such as water or smoke damage, our team is capable and qualified to restore your property to resume operations as quickly as possible.

From providing temporary power to arranging refrigeration units, our team will act quickly to minimize your losses. We understand that downtime in your business impacts your bottom line and your relationships with your customers.



### WINMAR®'S RAPID RESPONSE

Fires inflict profound devastation on employees and property, causing extensive restoration efforts. WINMAR® ensures swift and thorough restoration, collaborating with insurance experts for a safe return to pre-event conditions.



- Hotels & Motels
- Resorts
- Dine-In Restaurants
- Bars
- Convention Halls
- Meeting Facilities
- Theatres
- Entertainment Venues
- Arenas
- Casinos
- Raceways



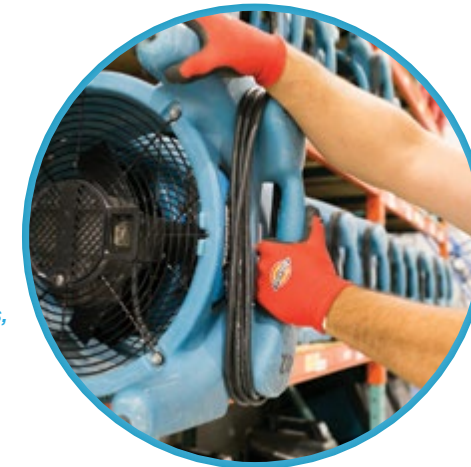
### RETAIL SERVICES

RELY on WINMAR® to have your retail business back in operation as quickly as possible. We strive for minimal downtime, as we know that your business operation and your team need to get back up and running. From flooding and sewer backups to fire or smoke damage, our team has the experience and capability to navigate any emergent event that impacts your facility. Our coast-to-coast teams are licensed and certified with the specialized training and specialized equipment to address the extent and damage of a water or smoke related incident.

In addition, we work with your corporate team to strive for minimal downtime to get your location back to business as quickly as possible.

### SPECIALIZED EQUIPMENT

Every WINMAR® location in Canada has access to our complete line of specialized equipment, including mobile pumps, temporary climate control, temporary heat and power generation, wall cavity drying units, portable freezers, HEPA air scrubbers, dry ice blasting, and much more.



- Financial Institutions
- Shopping Centres
- Malls
- Car Dealerships
- Grocery
- Convenience Stores
- Warehouse Centres
- Entertainment Venues
- Athletic Centres



### WIND DAMAGE

Severe wind, storms, hurricanes, and tornadoes can cause extensive property damage, including structural issues. WINMAR®'s expert teams swiftly assess and offer emergency restoration services, securing and stabilizing properties.





# TRUST in our Restoration SPECIALISTS

## FOR CONSTRUCTION AND PROJECT MANAGEMENT

WINMAR® has highly specialized project managers and professionals to take care of virtually any project. Combined with our fleet of specialized equipment and our decades of experience serving Canadians, we are the choice to lead restoration projects across Canada.

Our experienced Project Managers are fully qualified general contractors that can handle interior and exterior building projects including roofing, windows and doors, millwork, plumbing, electrical, painting and finishing.

Whether it's restoration, constructing new builds, general contracting or anything in between our licensed and insured professionals are ready to take on your next project. For any size project, you can TRUST the professionals at WINMAR®.

- Demolition
- Masonry & Millwork
- Concrete Forming
- Foundation Repair
- Electrical & Plumbing
- HVAC
- Drywall & Insulation
- Landscaping
- Framing
- Accessibility Updates
- Stucco & Painting



### GENERAL CONTRACTING

- Proficient in all phases of design-build projects, including permits and demolition
- Specialization in millwork and inspections to ensure quality and precision
- Capability to manage projects of any size, from small-scale renovations to large construction endeavours
- Deployment of fully-equipped teams to ensure efficient project execution

10 *Coming Through For You!*

# RESTORE and Renew SUSTAINABLY

## STRATEGIES AND SOLUTIONS FOR OUR FUTURE

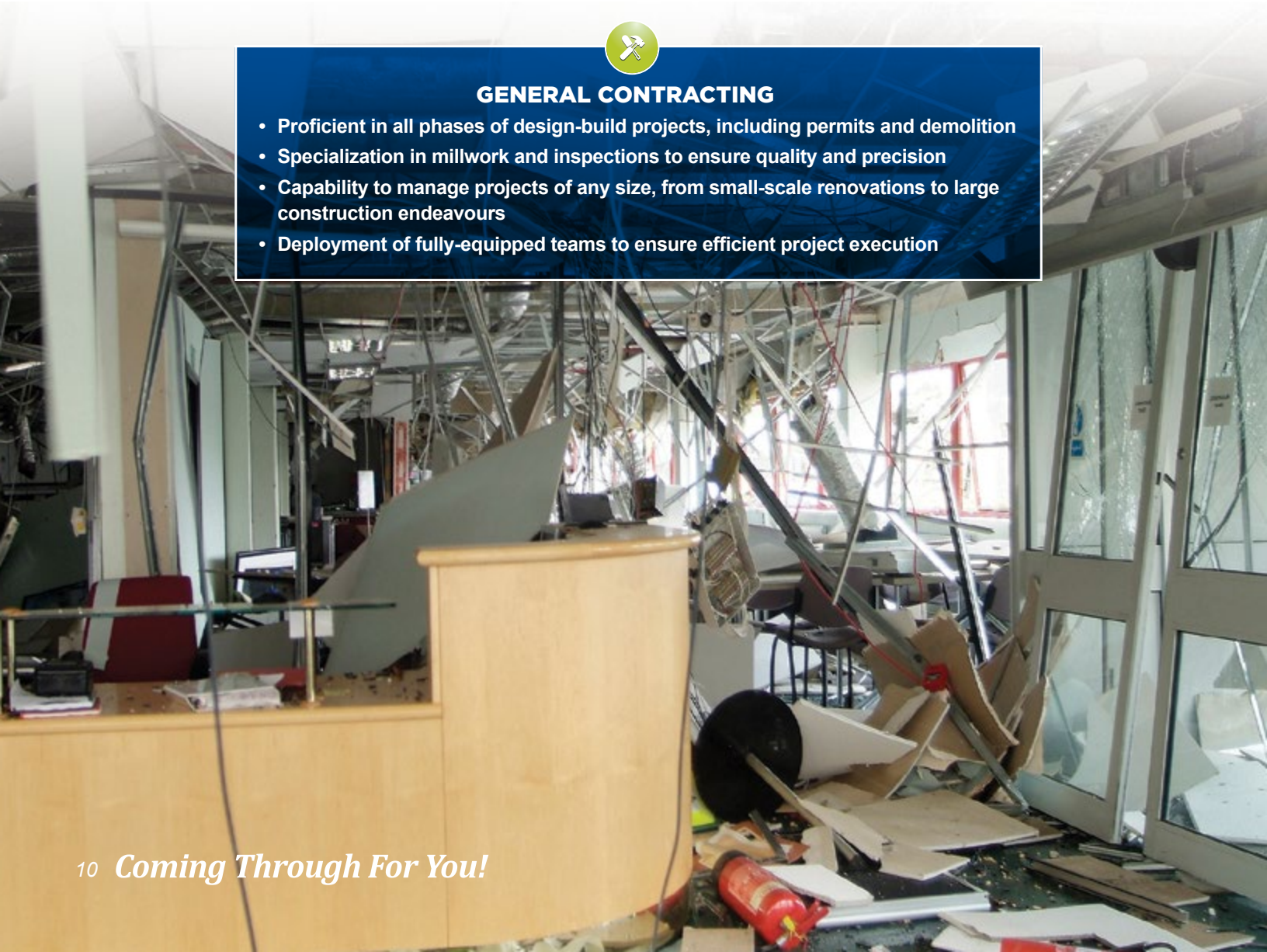


WINMAR® is committed to the future for our community and our environment. We believe in the power of restoration over replacement, and through our innovative cleaning systems and specialized equipment, we are proud to lead by example in sustainable practices. We remain dedicated in making positive changes that affect our community and how we impact our environment. In an effort to reduce our carbon footprint, we have introduced all electric vehicles to our E-Fleet.

At WINMAR®, we continuously invest in state-of-the-art tools and technologies that align with our sustainability goals. Each piece of equipment we use is chosen with the environment in mind, ensuring that we can restore items efficiently and effectively. By focusing on restoration, we keep content out of landfills, reduce our carbon footprint, and support a circular economy.

- Electric Vehicles
- Enviro-Friendly Products
- Hard Goods Cleaning
- Soft Wash Systems
- Renew Program
- Charitable Donations
- Recycling Building Materials
- Tablet Technology
- Safe Waste Disposal

“Giving back through sustainable Community initiatives.”





**A nationwide network,  
trusted since 1977.**

**90+ LOCATIONS**

WINMAR®'s network of 90+ locations across Canada provides quality services 24 hours a day, 365 days of the year.



**OUR MISSION**

WINMAR® delivers high-quality restoration services through a diverse network of entrepreneurs and trained professionals, committed to client satisfaction while building a sustainable future.



**OUR VISION**

WINMAR® is committed to becoming the premier restoration company in Canada, known for our innovation, inclusivity, collaborative partnerships, and best-in-class services, all while supporting the communities that we serve.



**OUR VALUES**

Accountability, Trust, Honesty, Respect, Collaboration, Reliability, Communication.



**24 Hour Emergency Response 1-866-494-6627** *Coming Through For You!* [winmar.ca](http://winmar.ca)